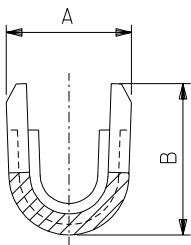
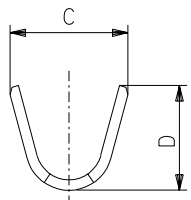


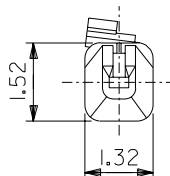
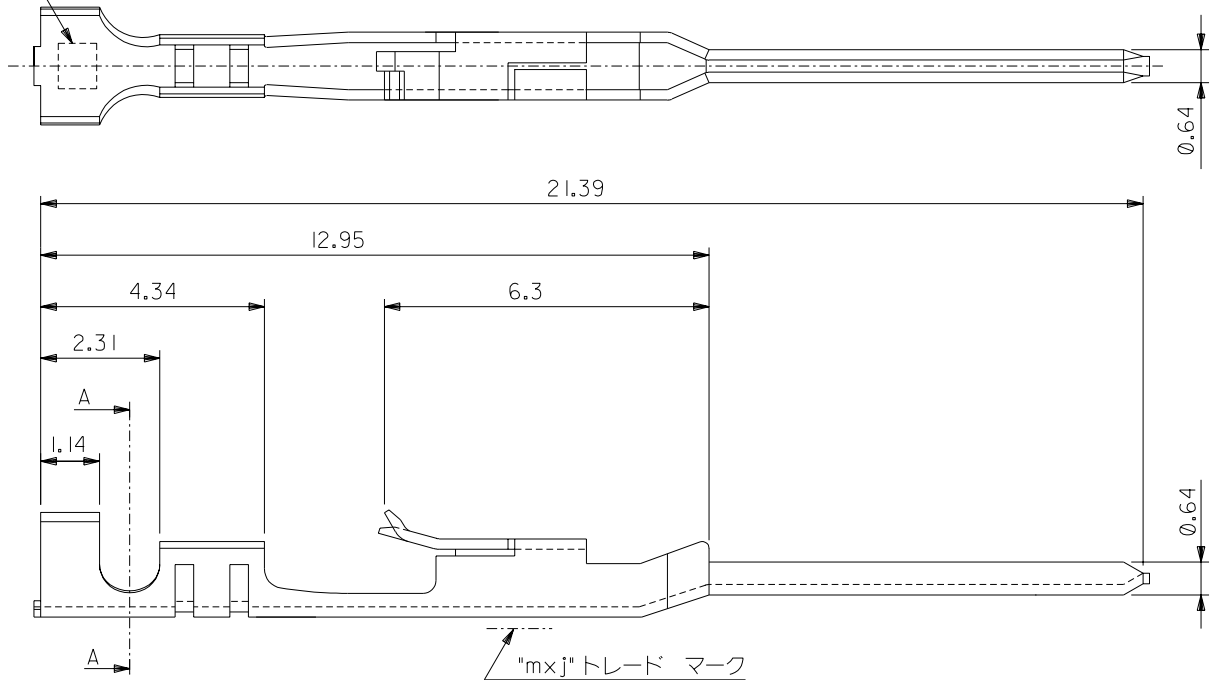
ENG. NO. SD-70021-0\*06-0\*23  
EDP NO. #



断面 A-A  
(SCALE:20-1)



適用電線表示



注記:

- 1. 適合ハウジング: 70066-\*\*\*\*, 70107-\*\*\*\*
- 2. メッキ仕様:
  - 接点部 : 金メッキ, 0.38 μmMIN.
  - 圧着部 : 錫メッキ, 1.91 μmMIN.
  - 下地メッキ: ニッケルメッキ, 1.27 μmMIN.

1.91	2.1	1.47	1.22	A	ø 1.6 MAX.	AWG#24-#30	連鎖状	70021-0006
1.91	2.1	1.65	1.84	C		AWG#22-#24	バラ状	70021-0223
D	C	B	A	適用電線表示	被覆外径	適用電線範囲	端子形状	MATERIAL No.
				材料	磷青铜			
				MATERIAL	t 0.203			
				仕上げ	注記参照			
				FINISH				
				適用電線範囲	表参照			
				WIRE RANGE				
				被覆外径	表参照			
				INS. RANGE				
				DRAWN BY	CHK'D BY			
				APP'D BY	SCALE			

角度 ANGLE ±3°

30 以上 OVER

10 以上 30 未満 UNDER

10 未満 UNDER

一般公差 GENERAL TOLERANCES

B 変更 (J2004-4519)

A 変更 (J060398)

0 新規作成 (T00110)

記号 変更内容 REVISION RECORD

DR. CHK. 日付 DATE

1.14/04/05/31

1.14/05/12/07

1.14/06/04/06

適用電線範囲 表参照

被覆外径 表参照

DRAWN BY A. Mitake

CHK'D BY M. R. 1800

APP'D BY S. Yamada

SCALE 10-1

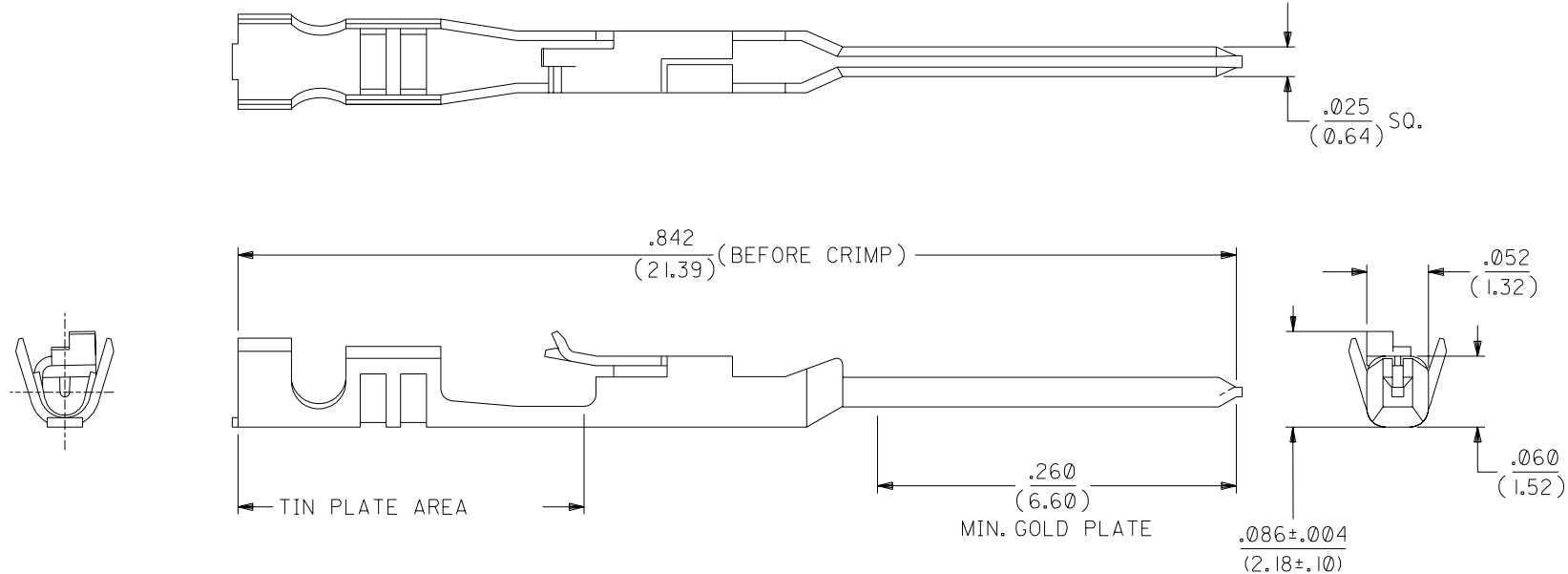
EDP. NO. #

ENG. NO. SD-70021-0\*06-0\*23

TITLE 名称 SL MALE CRIMP TERMINAL -LEAD FREE-

REV B





## NOTES:

1. TERMINAL FOR USE WITH HOUSING PART NO. 70066-\*\*\*\* & 70107-\*\*\*\*.
2. MATERIAL: .008/(0.20) THK. PHOSPHOR BRONZE.
3. TERMINAL TO BE USED WITH 22-24 AWG STRANDED WIRE WITH .064 DIA. MAX. INSULATION.
4. REFER TO MOLEX OPERATIONAL AND SERVICE MANUAL FOR DETAILS.
5. REFER TO PRODUCT SPECIFICATION NO. PS-70021.
6. PARTS SUPPLIED LOOSE PER DRAWING PK-70873-0822.

## PLATING:

.000015 GOLD PLATE IN SELECT AREA.  
.000075 MIN. TIN PLATE IN SELECT AREA.  
OVER NICKEL PLATE.

\*THE PRIMARY SHIPPING CARTON WILL BE LABELED "COMPLIANT TO RoHS DIRECTIVE 2002/95/EC AND ELV ANNEX II OF DIRECTIVE 2000/53/EC". CARTONS WITHOUT THIS LABEL MAY CONTAIN PRODUCT WITH LEAD.

E	LEAD FREE UCP2004-1769 RWHITE 04/03/15
D2	REVISED PER ECR #U80270 MCGRATH 97/07/31
D1	REVISED PER ECR #U70928 MCGRATH 97/06/26
D	REVISED PLTG. SPEC. PER ECR # U31149 08/19/93 REED
C	REVISED PER ECR# U82220 11-07-88 MJM/MCB
B	REDRAWN ON CAD PER E.C.M. #9509 11/10/86 WJF/MJM

MFG.	SH.	REV.	LTR.	REVISIONS
------	-----	------	------	-----------

DIMENSIONS SHOWN (METRIC) INCH		▽ = 0 ▼ = 0		REVISE ONLY ON CAD SYSTEM	
UNLESS OTHERWISE SPECIFIED TOLERANCES: ANGULAR ± 1/2°					
INCH		METRIC			
3 PLACE	± .010	---			
2 PLACE	± .015	± 0.25			
1 PLACE	---	± 0.35			
DRAFT WHERE APPLICABLE MUST REMAIN WITHIN DIMENSIONS					
DRWG. BY	WJF	CHK'D. BY	MJM		
APP'D. BY	WAZ	SCALE	10: 1		
FILE NAME S70021X24 DGN		THIS DRAWING CONTAINS INFORMATION THAT IS PROPRIETARY TO MOLEX INC. AND SHOULD NOT BE USED WITHOUT WRITTEN PERMISSION.		DIV.	SIZE
16-02-0115		SD-70021-0223		DA	B

TERMINAL, MALE CRIMP

MOLEX INCORPORATED SHEET NO. 1 DATE 10/30/86  
LISLE, ILL. 60532 U.S.A.

PART NO. 16-02-0115 DRWG. NO. SD-70021-0223